

richard
james



Perrinsfield

Lechlade, GL7 3SE

Guide Price
£400,000





House/Street Name

Location/County/Postcode

Freehold | EPC Rating -

 4  2  1

This attractive Cotswold stone townhouse offers flexible accommodation across three floors, featuring four double bedrooms, an impressive open-plan living space, and character features designed to complement the traditional stone exterior.



Scan here

**BROCHURE SIGN OFF HERE
(SAVED IN YOUR CANVA FOLDERS)**

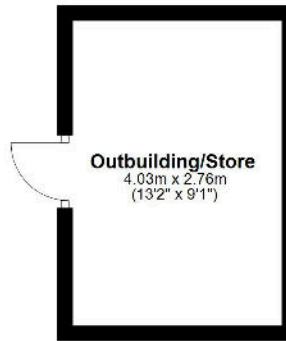
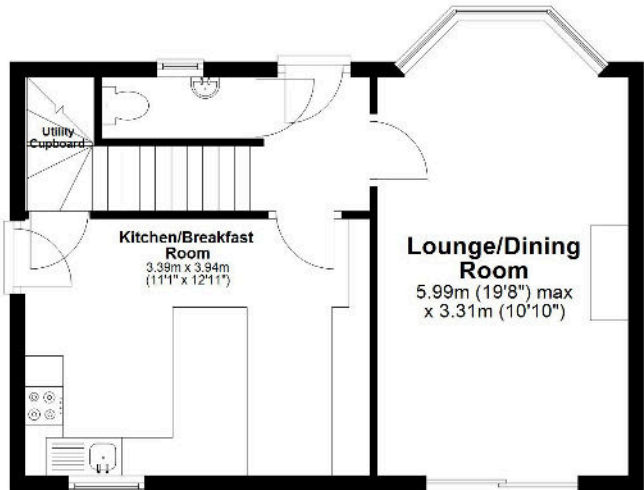
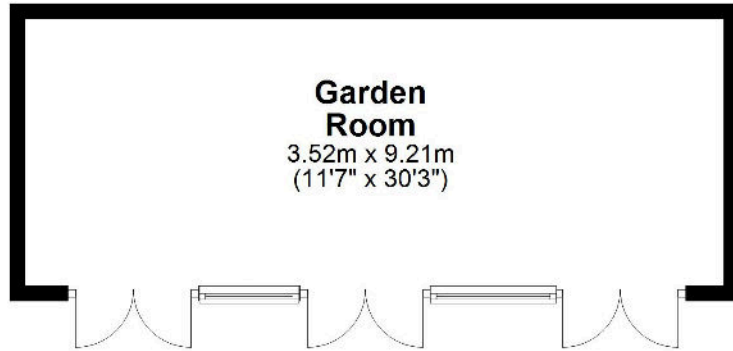
PROPERTY
HIGHLIGHT
HERE



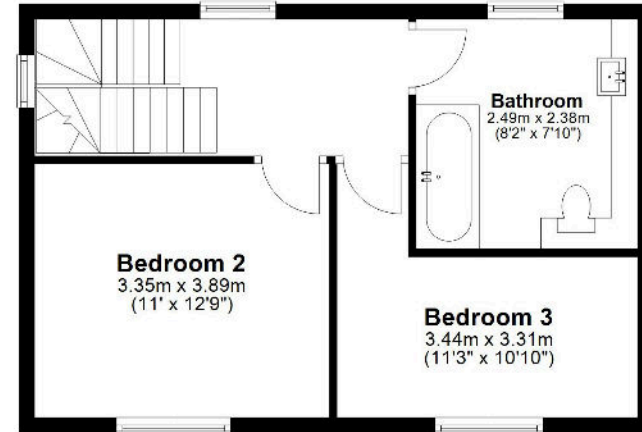
PROPERTY
HIGHLIGHT
HERE



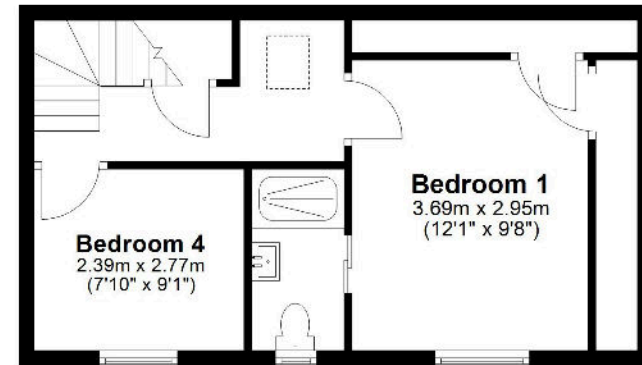
Ground Floor
Approx. 85.7 sq. metres (922.9 sq. feet)



First Floor
Approx. 42.6 sq. metres (458.5 sq. feet)



Second Floor
Approx. 33.3 sq. metres (358.4 sq. feet)



Total area: approx. 161.6 sq. metres (1739.8 sq. feet)

01793 765 292

highworth@richardjames.uk

1 Swindon Road | Highworth | SN6 7AH

richardjames.uk

