



Homefield, Royal Wootton Bassett, SN4 8DE

Guide Price £365,000

richard james

Village & Country Homes

richard
james



Homefield

Royal Wootton Bassett

Freehold

 4
  1
  3

A beautifully extended four-bedroom semi-detached home, ideally positioned within a highly sought-after cul-de-sac in Royal Wootton Bassett.

Set on a generous plot with excellent frontage and a mature, private rear garden, this well-proportioned family home offers superb living space enhanced by thoughtful extensions and modern improvements.

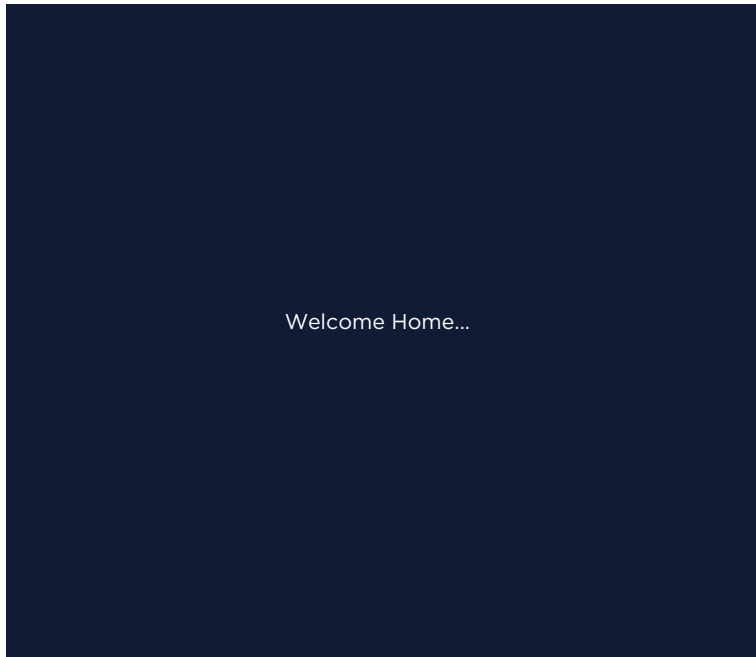
Upon entering, the bright entrance hallway leads to a spacious living room featuring a large picture window that floods the room with natural light. Beyond this is a separate dining room, perfectly placed for family meals and entertaining, with direct access to the conservatory overlooking the garden.

The well-appointed kitchen enjoys views over the rear garden and offers ample storage and preparation space. A practical rear lobby connects to the outside and provides access to the cloakroom and utility room, keeping the main living spaces beautifully organised.

To the first floor, the home offers four bedrooms, including three generous doubles, all served by a family bathroom.

Externally, the property boasts an impressive frontage with driveway parking for multiple vehicles and access to the single garage. The mature rear garden is a standout feature—well enclosed, beautifully kept, and offering both patio and lawned areas ideal for children, pets, and outdoor entertaining.

Additional benefits include uPVC double glazing and gas-fired central heating.







**richard
james**



richard
james



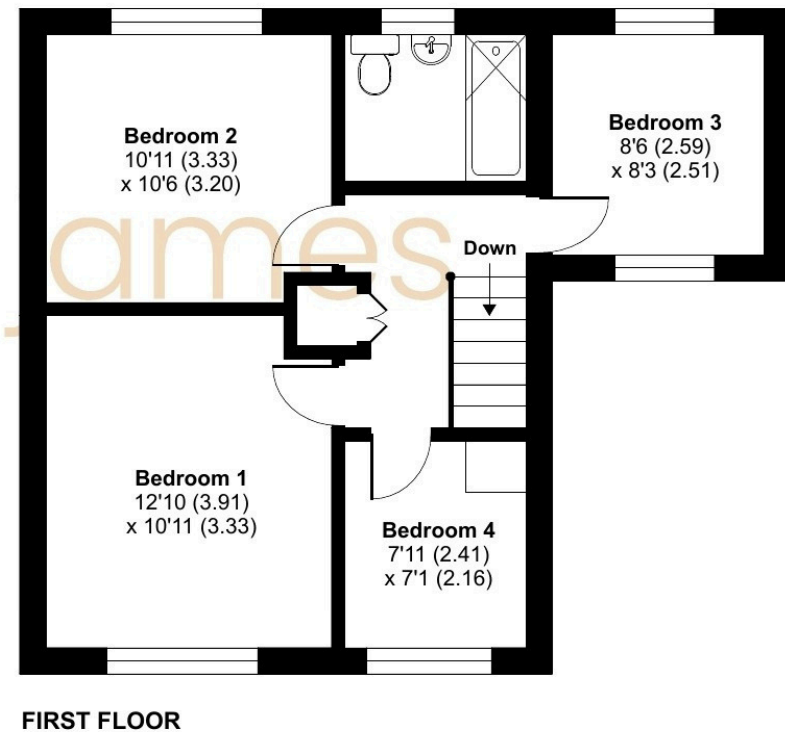
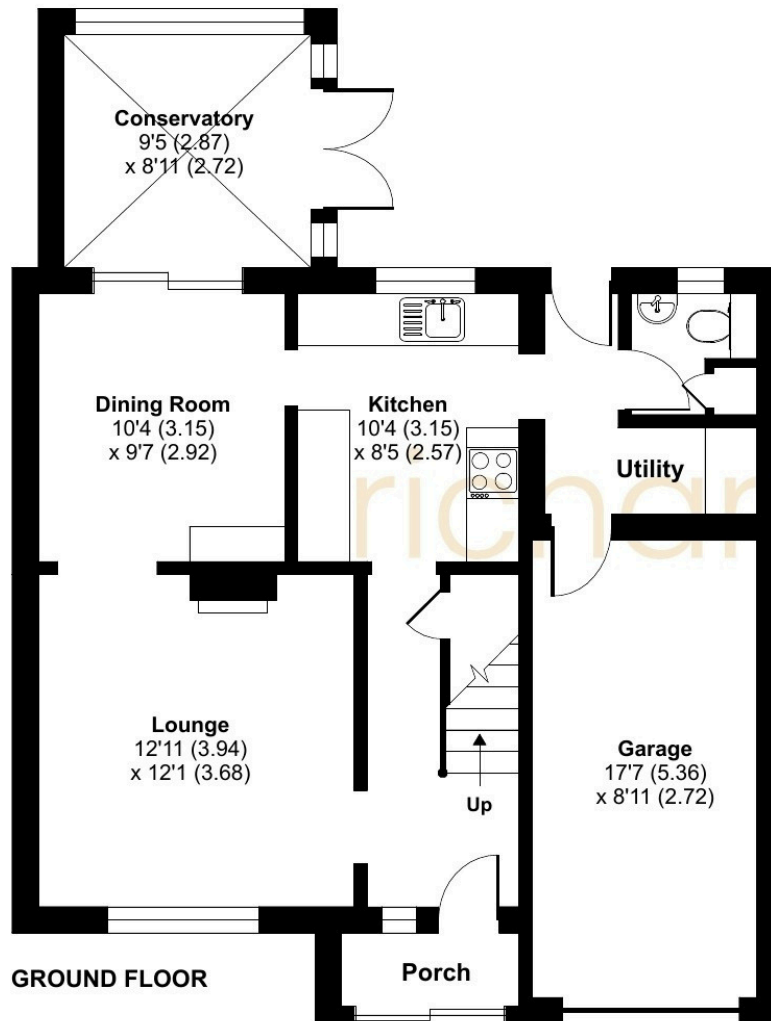
Floorplan

Approximate Area = 1153 sq ft / 107.1 sq m

Garage = 153 sq ft / 14.2 sq m

Total = 1306 sq ft / 121.3 sq m

For identification only - Not to scale



01793 855 117

rwb@richardjames.uk

139 High Street | Royal Wootton Bassett | SN4 7AY

richard james

richardjames.uk