

richard
james



3 Roberts Close

Wroughton, SN4 ORS

Offers in excess of
£350,000



3 Roberts Close

Wroughton, SN4 0RS

Freehold | EPC Rating - D

 3  1  1

Set within a quiet cul-de-sac, this well-proportioned three-bedroom semi-detached bungalow occupies a fantastic plot and offers an excellent opportunity for buyers to put their own stamp on a great home.

The property provides a spacious and flexible layout, comprising a welcoming entrance hallway, a bright reception room, and a good-sized kitchen/dining area with the added benefit of a separate utility space. The three good sized bedrooms all benefit from built-in wardrobe storage, and are served by a recently fitted family bathroom.



Ellis-Rose Wigley

Branch Manager

01793 814 542

ellisrosewigley@richardjames.uk

   @rjstateagent



Scan here



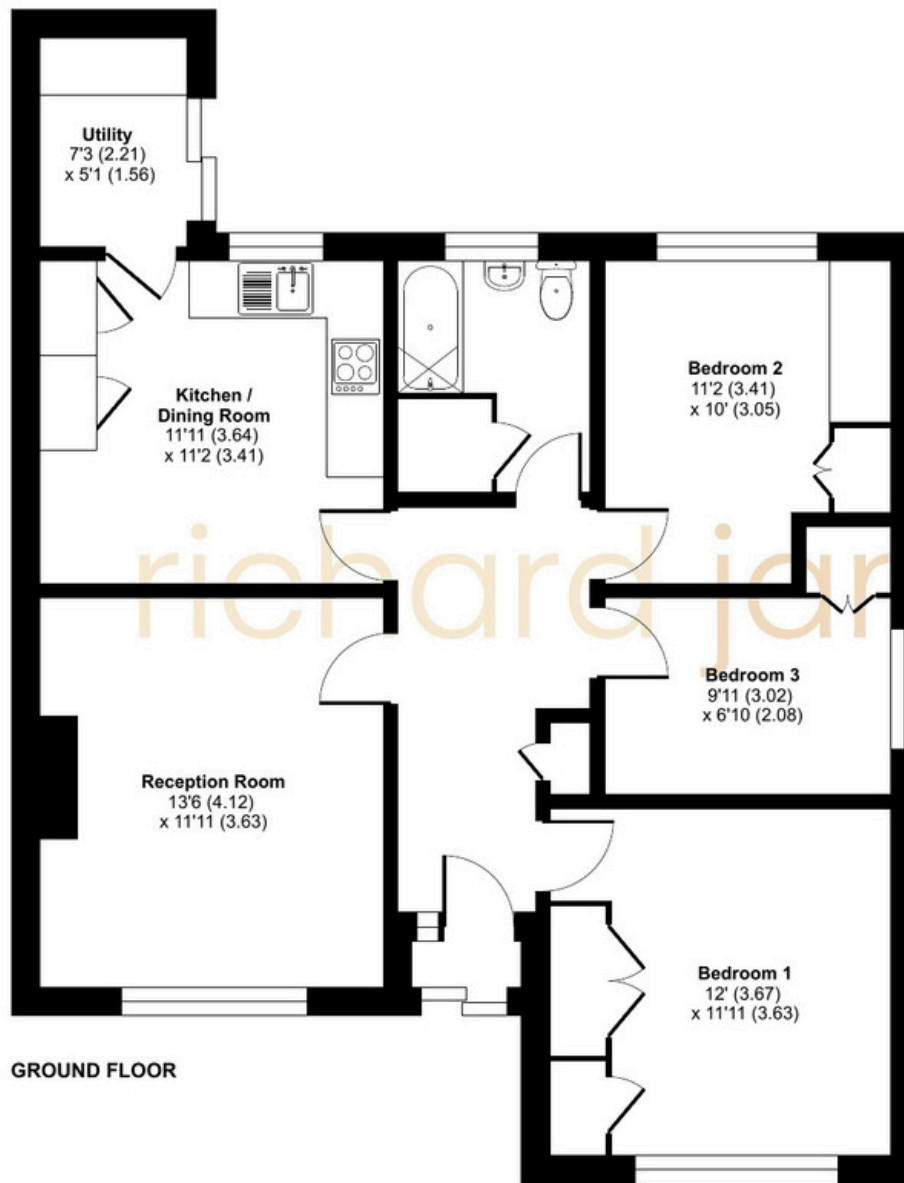
Externally, the home truly stands out. The substantial private garden offers excellent potential for landscaping or extension (subject to planning), creating the perfect space for outdoor living. There is also a detached garage and driveway parking for multiple vehicles.

Located in the highly desirable village of Wroughton and within easy walking distance of a range of local amenities, including shops, pubs, schools, and a doctor's surgery. The property also benefits from beautiful countryside walks right on the doorstep.

This is an ideal opportunity for buyers looking to personalise or modernise a well-located home, with generous space both inside and out.

Large Rear
Gardens



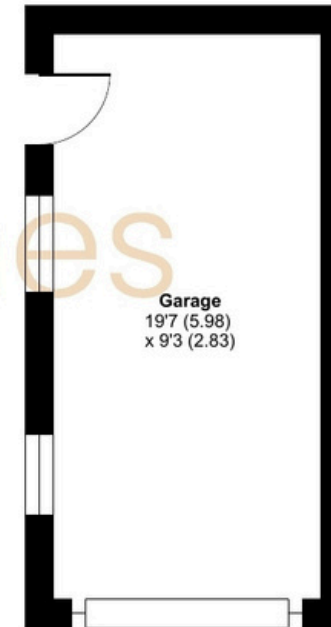


Approximate Area = 839 sq ft / 77.9sq m

Garage = 182 sq ft / 16.9 sq m

Total = 1021 sq ft / 94.8 sq m

For identification only - Not to scale



GROUND FLOOR



Floor plan produced in accordance with RICS Property Measurement 2nd Edition, incorporating International Property Measurement Standards (IPMS2 Residential). © nitchecom 2026. Produced for Richard James. REF: 1438710

01793 814 542

wroughton@richardjames.uk

80 High Street | Wroughton | SN4 9JZ

richardjames.uk



@rjestateagent